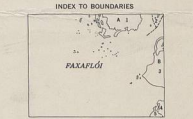
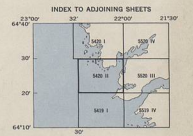
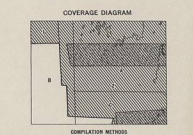


GLOSSARY table with symbols and their meanings for various geographical features.

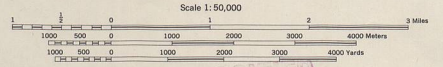


Scale and proper symbols table for various features like rivers, roads, and boundaries.



AMS C762
AMS 1, 1950

Prepared under the direction of the Chief of Engineers by the Corps of Engineers, U. S. Army Map Service (AMS), Washington, D. C. Controlled in 1949 by photogrammetric (analogical) methods by reference to United States Coast and Geodetic Survey charts...



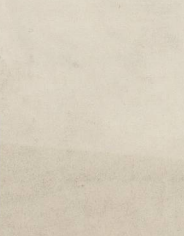
RESTRICTED UNRESTRICTED
CONTour INTERVAL 20 METERS
BY NUMBERS (SEE TO BOUNDARY MEAN SEA LEVEL)

TRANSVERSE MERCATOR PROJECTION
HORIZONTAL DATUM IS BASED ON THE ASTROMETRIC STATION OF REYKJAVIK... POINTS OF MEAN OF GREENWICH MERIDIAN

ONE THOUSAND METER UNIVERSAL TRANSVERSE MERCATOR GRID, INTERNATIONAL SPHERE, ZONE 27

THE LAST THREE DIGITS OF THE GRID NUMBERS ARE OMITTED

LEGEND table describing symbols for roads, boundaries, and other features.



GRID COORDINATES table showing UTM grid numbers for the map sheet.

UNLESS OTHERWISE SPECIFIED ON THIS MAP, ALL DATA ARE BASED ON THE DATUM ESTABLISHED IN THE YEAR 1900 BY THE U. S. ARMY MAP SERVICE, WASHINGTON, D. C. MAPS BY THIS SERVICE WILL BE RETURNED ON REQUEST BY RETURN.